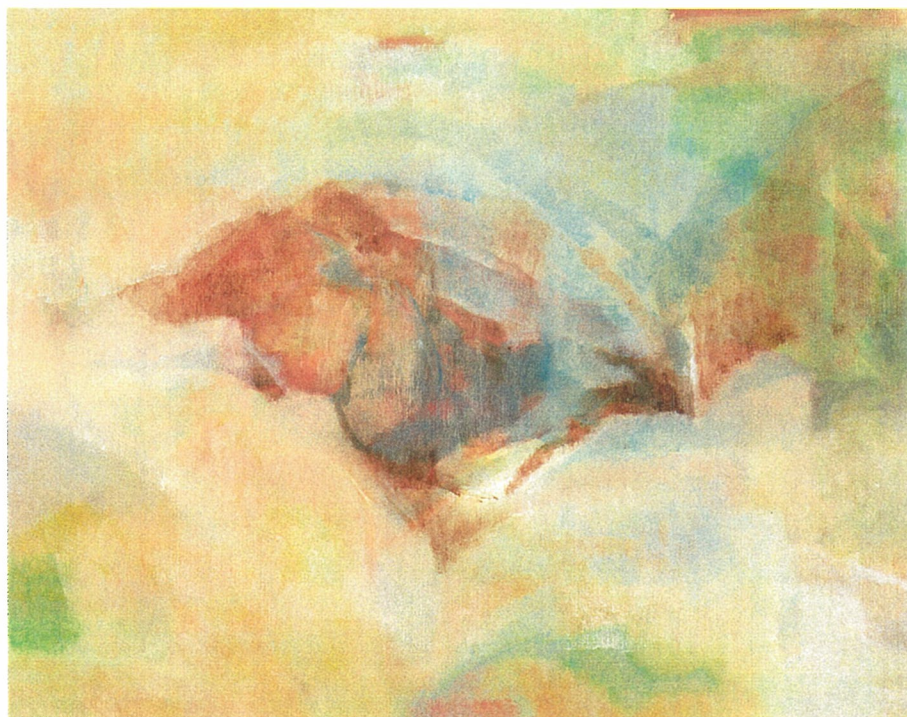


***The Ninth Nagoya International
Blood and Marrow Transplantation Symposium***

*Chronic Graft-versus-host Disease
— per aspera ad astra —*

*May 19 (Sat), 20 (Sun) 2012
Nagoya JAPAN*



*Organized by Nagoya Blood and Marrow Transplantation Group,
Yakult Honsha Co., Ltd. and Kyowa Hakko Kirin Co., Ltd.*

Welcome Message

On behalf of the Organizing Committee of the Ninth Nagoya International Blood and Marrow Transplantation (BMT) Symposium, I would like to welcome you in Nagoya. This bi-annual symposium has been organized by Nagoya BMT Group, Yakult Honsha Co., Ltd. and Kyowa Hakko-Kirin Co., Ltd. since 1996 in order to provide an international forum for exchanging the up-to-date information and experiences.



This time, we are especially grateful that so many foreign guests and domestic participants gather together despite of one year delay of the schedule because of the earthquake and the nuclear power plant accident in the last year.

Hematopoietic stem cell transplantation (HSCT) keeps increasing in numbers and the current global activity survey conducted by Worldwide Network for Blood and Marrow Transplantation revealed that recently, more than 50,000 HSCT were performed in more than 70 countries/regions whole through the world in a single year of 2006. Nevertheless, it is also true that certain mortality and morbidity have remained to be solved although the outcomes of these HSCT have shown steady development by utilizing various stem cell sources, new preconditioning regimens, new immune suppressants and new anti-bacterial and fungal agents. To obtain certain breakthrough on these problems, exchanging of information, analysis of data and critical discussion in global level is becoming essential. In this symposium, we focus on chronic graft versus host disease (c-GVHD) and the associated clinical symptoms, which are old and new thesis to be understood and resolved for further improvement of patients' survival and quality of life after allogeneic HSCT. We are happy that internationally prominent investigators from North America and Europe as well as active domestic investigators participate in this program and we expect that all the participants could get fruitful results after the symposium. We also hope that this symposium would offer a good opportunity to exchange information of other topics as well as to create a real friendship among the participants.

Yoshihisa Kodera

May 19, 2012
Yoshihisa Kodera

Symposium Committees

Chairman	Yoshihisa Kodera	Aichi Medical University
Vice Chairman	Seiji Kojima Yasuo Morishima Yoshihisa Morishita Tomoki Naoe	Nagoya University Aichi Cancer Center Konan Kosei Hospital Nagoya University
Advisory Committee	Hidehiko Saito Makoto Ogawa	Nagoya Medical Center Tokushukai-Group Oncology Centerr
Secretariat General	Koichi Miyamura Makoto Murata Koji Kato	Japanese Red Cross Nagoya First Hospital Nagoya University Japanese Red Cross Nagoya First Hospital
Organizing Committee	Tatsuya Adachi Yoshiki Akatsuka Yoshiko Atsuta Osami Daimaru Nobuhiko Emi Motohiro Hamaguchi Akitoshi Hanamura Masaya Hayakawa Keizo Horibe Takuiji Ichihashi Shinsuke Iida Yasuhiko Ito Masanobu Kasai Takae Kataoka Tomohiro Kinoshita Yumi Kojima Hiroshi Kosugi Shigeru Kusumoto Hidetsugu Mihara Shuichi Mizuta Kensuke Naito Kazunori Nakase Michinori Ogura Kohshi Ohishi Takaaki Ono Yukiyasu Ozawa Hiroshi Sao Ritsuro Suzuki Hirofumi Taji Yoshiyuki Takahashi Hisashi Tsurumi Keitaro Tsushita Kazuhito Yamamoto Makoto Yazaki	Meitetsu Hospital Fujita Health University Nagoya University Daiyukai General Hospital Fujita Health University Japanese Red Cross Aichi Blood Center Gifu Prefectural Tajimi Hospital Komaki City Hospital Nagoya Medical Center Okazaki City Hospital Nagoya City University Nagoya City University Nagoya Daini Red Cross Hospital Nagoya Memorial Hospital Aichi Cancer Center Nagoya Ekisaikai Hospital Ogaki Municipal Hospital Nagoya City University Aichi Medical University Fujita Health University Hamamatsu Medical Center Mie University Nagoya Daini Red Cross Hospital Mie University Hamamatsu University Japanese Red Cross Nagoya First Hospital Meitetsu Hospital Nagoya University Aichi Cancer Center Nagoya University Gifu University Chukyo Hospital Aichi Cancer Center East Medical Center Moriyama Municipal Hospital, City of Nagoya
NBMTG	Isamu Sugiura Kimikazu Matsumoto Akio Kohno Hiroatsu Iida Tetsuya Nishida Masashi Sawa	Toyohashi Municipal Hospital Japanese Red Cross Nagoya First Hospital Konan Kosei Hospital Nagoya Medical Center Nagoya University Anjo Kosei Hospital
Symposium Office	Central Convention Service, Inc. 3-19-28, Sakae, Naka-ku, Nagoya, Aichi 460-0008, JAPAN Phone: 052-269-3181 / Fax: 052-269-3252	

List of Speakers

Mary E. D. Flowers	Clinical Division of Fred Hutchinson Cancer Research Center and the University of Washington, Seattle, WA, USA
Kirsten M. Williams	Experimental Transplantation and Immunology Branch National Cancer Institute, NIH, USA
John E. Levine	Blood and Marrow Transplantation Program University of Michigan, USA
Minako Iida	Dept. of Promotion for Blood and Marrow Transplantation Aichi Medical University School of Medicine, JAPAN
Yoshiyuki Takahashi	Department of Pediatrics Nagoya University Graduate School of Medicine, JAPAN
Irwin D. Bernstein	Fred Hutchinson Cancer Research Center, Seattle, WA, USA
Gerard Socie	Hematology Transplantation Hospital Saint Louis and University Paris VII, France

General Information

- Date: Saturday, May 19 & Sunday, May 20, 2012
- Venue: The Westin Nagoya Castle
3-19, Hinokuchi-cho, Nishi-ku,
Nagoya, 451-8551, Japan
Tel: +81-52-521-2121
(Symposium site: Seiun-no-ma: 2nd floor)
- Registration: Saturday, May 19: 13:00–18:50
Sunday, May 20: 08:00–11:30
- Main Topics: Chronic Graft-versus-host Disease
— per aspera ad astra —
- Symposium: Saturday, May 19: 14:00–18:50
Sunday, May 20: 08:30–11:30
- Welcome Party: Saturday, May 19: 19:00–21:00
The Westin Nagoya Castle
(Tenshu-no-ma: 2nd floor)
- Official Language: English

Scientific Program

– Saturday, May 19 –

(Symposium site : Seiun-no-ma: 2nd floor)

13:00–14:00 Open / Registration

14:00–14:05 Opening Remarks: Yoshihisa Kodera (Aichi Medical University, Japan)

(**Keynote Address**) 14:05–15:15

Chairperson: Koichi Miyamura

(Japanese Red Cross Nagoya First Hospital, Japan)

“Chronic GVHD – The Importance of Risk Factors and Early Diagnosis to Guide
Appropriate Therapy and Clinical Trials”

Mary E. D. Flowers (Fred Hutchinson Cancer Research Center, USA)

(**Session 1**) 15:15–16:05

Chairperson: Shinichiro Okamoto (Keio University, Japan)

“Clinical Assessment and Therapy of Bronchiolitis Obliterans after Hematopoietic
Stem Cell Transplantation”

Kirsten M. Williams (National Institutes of Health, USA)

16:05–16:25 Intermission (20 min.)

16:25–17:15 Chairperson: Takanori Teshima (Kyushu University, Japan)

“Extracorporeal Photopheresis for Chronic Graft-versus-Host Disease”

John E. Levine (University of Michigan, USA)

17:15–17:35 Chairperson: Takahiro Fukuda (National Cancer Center, Japan)

[Mini Report from Japan]

“Mycophenolate Mofetil (MMF) and Chronic Graft-versus-Host Disease:
Recent Findings from the Nationwide Survey in Japan”

Minako Iida (Aichi Medical University, Japan)

(**Table Discussion**) 17:35–18:50

Chairpersons: Takahiro Fukuda (National Cancer Center, Japan)

Makoto Murata (Nagoya University, Japan)

Discussers: Mary E. Flowers (Fred Hutchinson Cancer Research Center, USA)

Kirsten M. Williams (National Institutes of Health, USA)

John E. Levine (University of Michigan, USA)

Gerard Socie (Hospital Saint Louis, France)

(**Welcome Party**) 19:00–21:00 (120min)

– Sunday, May 20 –

(Symposium site : Seiun-no-ma: 2nd floor)

08:00–08:30 Open / Registration

(**Session 2**) 08:30–09:05

Chairperson: Shinji Nakao (Kanazawa University, Japan)

“Increase in NK-cell Lysis of Leukemic Blasts Due to Loss of Mismatched HLA
Haplotype after Haploidentical Stem Cell Transplantation”

Yoshiyuki Takahashi (Nagoya University, Japan)

09:05–10:00 Chairperson: Satoshi Takahashi

(Institute of Medical Science, the University of Tokyo, Japan)

“Notch-Mediated Regulation of Hematopoiesis: Basic and Clinical Implications”

Irwin D. Bernstein (Fred Hutchinson Cancer Research Center, USA)

10:00–10:15 Intermission (15 min.)

(**Special Lecture**) 10:15–11:25

Chairperson: Masahiro Imamura (Sapporo Hokuyu Hospital, Japan)

“Chronic Graft-Versus-Host Disease: Long Term Results from a Randomized Trial on
GvHD Prophylaxis with or without Anti-T-Cell Globulin ATG-Fresenius”

Gerard Socie (Hospital Saint Louis, France)

11:25–11:30 Closing Remarks: Koji Kato (Japanese Red Cross Nagoya First Hospital, Japan)

■ **Symposium site & Hotel Accommodation:**

The Westin Nagoya Castle

3-19, Hinokuchi-cho, Nishi-ku,
Nagoya, 451-8551, Japan
Tel: +81-52-521-2121

■ **Welcome Party:**

Date: May 19 (Sat.) 19:00–21:00

Location: The Westin Nagoya Castle
Tenshu-no-ma (2nd floor)